

# **CAM10**

## **Kids Camera**

**User Manual**

**Clickid**

Safety Information.....	3
What's In the Box?.....	4
Controls And Functions.....	5
Instructions Guide.....	7
Basic Operation.....	7
Camera Settings.....	8
Taking Pictures/Camera.....	10
Video Recordings.....	11
Playback (Photo/Video Gallery).....	12
Games.....	13
Music.....	14
Troubleshooting.....	15
Specification.....	16
Support & Warranty.....	17
Safety Information.....	18

ClicKid CAM10 dual digital camera, has been designed especially for kids. Using this digital camera children of age 3+ can easily take photos and videos using 40+ filters, play games or music.

## Safety Rules

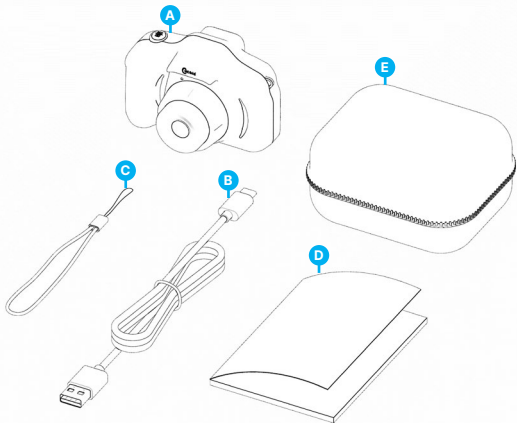
- Before using, we would strongly encourage you to carefully read through the user manual and follow the safety instructions to ensure your safety.
- Be careful with any edges, uneven surfaces, metal parts and packaging accessories to prevent any possible injury or damage.
- Do not modify, repair, or dismantle the product. This may result in fire, electric shock or product damage.
- Do not use any diluent or volatile liquid to clean the product.
- Do not use the product in a hazardous location.

## Warning

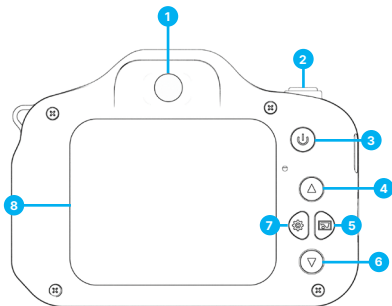
- Do not give this camera to children under the age of 3, without adult supervision.
- Do not disassemble the product.
- Do not drop the product or subject it to any hard impact force.
- Always keep the camera in a dry place. Avoid humid environments and any contact with liquids.
- Colours and contents may vary from photos and illustrations.
- Remove all packaging materials before giving the camera to a child.
- Retain the manual and packaging for future reference.

**What's in the Box?**

- A. ClickKid CAM10 Digital Camera
- B. 1 x USB Type -C Charging Cable
- C. 1 X 32GB Micro SD card
- D. 1 x Lanyard
- E. Instruction Manual
- F. Carry Case

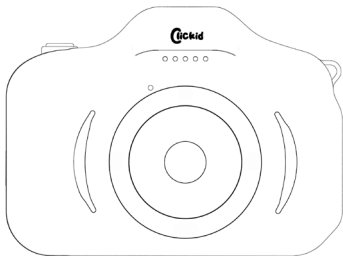


## Camera Overview

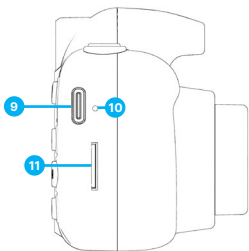


- |    |                     |    |                             |
|----|---------------------|----|-----------------------------|
| 1. | Front Camera        | 5. | Right Button                |
| 2. | Photo/Video Shutter | 6. | Down Button                 |
| 3. | Power/Return Button | 7. | Left (Timer Setting) Button |
| 4. | Up Button           | 8. | 2.0 Inch IPS Screen         |

## Camera Overview



- 9. Type-C Charging Port
- 10. Reset
- 11. Micro SD Card Slot  
(Support up to 32GB)



## Basic Operation

Before first use, make sure the ClicKid CAM10 Digital Camera is fully charged. Using the Type-C Charging Cable, plug the Type-C end into the camera port and the USB end into a wall charger/Laptop. Once the camera is plugged in, the charging LED light on the camera will turn red, and once the camera is fully charged the LED light will turn blue indicating that the camera is now ready to be used.

To switch the camera ON, press and hold down the 'Power' button (on top of the arrow buttons) for 2-3 seconds. The camera will switch on and display the main camera features with 6 main tabs on the screen: Camera (Photos), Video, Playback (Photo & Video Album), Camera Settings, Games and Music.

To select any of these, use the arrow buttons: 'Right', 'Left', 'Up', or 'Down'. Highlight the one you would like to access and press the 'Photo/Video Shutter' button to confirm.

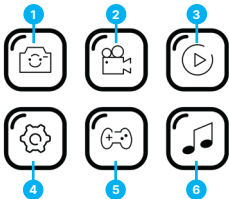
To return to the main menu, press the 'Power' button once.

**Standby:** When your camera is not in use for a few minutes, the camera will go into Standby Mode and switch OFF the LCD display.

**Automatic Switch off:** If your camera is not being used after 3 or 5 minutes while in Standby Mode, the camera will automatically switch OFF.

**Note:** You can set the length of time for the 'Standby' Mode, and the automatic switch off time, via 'Camera Settings'.

1. **Camera** - (enter this tab to take pictures).
2. **Video recording** - (enter this tab to start recording videos).
3. **Playback** - (enter this tab to view your photo/video gallery).
4. **Settings** - (access this tab to adjust the camera settings).
5. **Games** - (enter this tab to play games)
6. **Music** - (enter this tab to play audio from your SD card)



## Camera Settings

To switch camera 'ON', press and hold down the 'POWER' button for 2 seconds. The list with all 6 tabs will then open. To access the 'Camera Settings' tab use the arrow buttons to navigate through and highlight the Settings icon. Press the 'Photo/Video' shutter to button once to enter.

Once in the 'Camera Settings' menu, the following sub-menus will then be displayed as a list: Size, Capture Timer, Resolution, Time Stamp, Language, LCD OFF, Auto OFF, Volume, Format, Date Time, System Reset and System Version.

Within 'Camera Settings' you will find the following sub-menus:

**Size:** Enter this section to adjust the picture size/resolution.

**Capture Timer:** Enter this sub-menu to adjust the timer for 2, 5, 10 seconds or set to OFF. Press the 'Photo/Video Shutter' button to confirm your selection. Once selected the camera will only use this timer when activated. To use the capture timer, press the 'Left' arrow button to activate when taking a photo. The camera will then display a small clock icon at the top of the screen indicating that the timer is active. Press the 'Photo/Video' Shutter button to take a picture. The camera's display will then show the downtime counting to 0. Once the timer has ended, the photo is taken.

**Resolution:** Enter this section to select one of the 3 options available: 1080P, 720P or VGA (for video).

**Time Stamp:** Enter this sub-menu to set the time stamp as ON or OFF.

**Language:** Enter this sub-menu to change the language.

**LCD OFF:** Enter this sub-menu to set the time that you would like to use for the camera to go in Standby Mode-this can be after 1 minute, 2 minutes or 3 minutes of no use or you can set this to OFF if you do not wish the camera to go on Standby mode.



**Auto OFF:** Under this sub-menu, you can set a timer for 3 or 5 minutes or set this as OFF. Using the arrow buttons choose an option, then press the 'Photo/Video' Shutter button to confirm your selection. Once selected, the ClicKid camera will then automatically switch OFF when not in use. If you do not want to use any timer, select to have this as OFF.

**Volume:** Enter this section to set the volume level in between level 0 & 7, as per your preferences.

**Format SD:** If you are using a Micro-SD Card, you can use this feature to format your Macro-SD Card.

**Note:** *It would be recommended to save all existing photos and video files you have on your SD card on a computer/laptop before formatting the card, otherwise these might be lost.*

**Date Time:** Use this section to set the date and the time on your digital camera. Using the arrow buttons, set the date and time and then press 'Photo/ Video Shutter' button to confirm.

**System Reset:** You can use this feature to reset the digital camera to default settings.

**Note:** *If you are using a micro-SD card, please remove before processing this camera reset.*

Using the arrow buttons scroll through the sub-menus list to make your selection. Highlight your choice and press the 'Photo/Video Shutter' button to enter. Once entered, use the arrow button again to see the options available on the specific sub-menu. Choose the one you would like to set and press 'Photo/Video' Shutter button to confirm your selection in that specific sub-menu. Press the 'Power' button to exit to Main Menu.

## Taking Pictures

The ClickKid Camera has included 50 pictures of built-in memory.

To access this feature and start taking photos, switch on the camera by pressing and holding down the 'Power' button for 2-3 seconds. The main menu will then open, showing all 6 main features. Using the arrow buttons, navigate through the main menu and highlight the icon showing a 'Camera'. Press the 'Photo/Video Shutter' button to enter.

To take a picture press the 'Photo/Video' shutter button.

The camera has filters and picture stickers frames available. While in Photo Mode, press the 'Up' arrow button for filters and press the 'Down' arrow button to pick any of the photo / sticker frames you would like to use. Press 'Power/Video' shutter button to take a picture with it.

To use the capture timer you have set, press the 'Left' button to activate. Once activated a yellow clock icon will be visible on camera display, press the Photo/Video Shutter button to take a picture with it. The display will then show the countdown of your timer and automatically take a picture when this is down to 0. You can set the capture timer length to 2s, 5s, 10s, or set this as OFF (via Camera Settings, under 'Capture Timer' as described on page 7).

To zoom in, press and hold on the 'Up' arrow key, release when you want to stop zooming and then take the picture.

To zoom out, press and hold on the 'Down' arrow key, release when you want to stop zooming and then take the picture.

ClickKid is a dual camera, therefore you can also take a selfie. While in Photo Mode, press the 'Right' arrow button once. Press the 'Photo/Video Shutter' button to take a selfie. Press the 'Right' button again to exit Selfie Mode.

To return to the main menu, press the 'Power' button once and you will return to Camera's Main Menu.

## Video Recordings

To use this feature of video recordings, you must use a Micro-SD Card of up to 32GB.

### Using a Micro-SD Card

Insert the Micro-SD Card into the SD slot (this can be found on the right-hand side of the camera).

Position the Micro-SD card with the chipset facing the camera display, and gently push until it clicks. Once inserted, switch the camera on by pressing and holding the 'Power' button down for 2-3 seconds.

To remove the Micro-SD Card, gentle push on the card, then the Micro-SD will pop-out.

***Note: While using an SD card, all photos and videos will be saved on the Micro-SD card.***

### Recording a video

To record a video, select the 'Video' tab from the main menu, using the arrow buttons. Highlight and select the 'Video' icon, then press 'Photo/Video Shutter' to enter. To start recording a video, press the 'Photo/Video' Shutter button.

To stop recording a video, press again the 'Photo/Video Shutter' button.

***Note: The filters, Zoom, and the Self-timer features are the same ones as per the Photos.***

To exit the Video tab and return to the main menu, press the 'Power' button once and you will return to main menu.

## Playback

To view the photos saved to camera memory, select the 'Playback' on the main menu. Once highlighted, press the 'Photo/Video Shutter' button to enter.

To look through your photos and videos use the 'Right' and 'Left' arrow buttons.

To play or pause a recorded video, press the 'Photo/Video' Shutter button once.

To delete a single photo or a video from the gallery, once displayed on screen, press the 'Up' arrow button to delete the photo/video. Select 'Execute' to confirm or 'Cancel' and press 'Photo/Video' shutter button to confirm your selection.

Press the 'Down' arrow button to delete ALL Photos/Videos from your Playback gallery. Select 'Execute' to confirm or 'Cancel', and then press. 'Photo/Video' shutter button to confirm your selection.

To exit the 'Playback' tab and return to the main menu, press the 'Power' button once.

## Games

To play any of the ten games, select the 'Game' tab from the main menu. Highlight the 'Games' icon and then press 'Power/Video' Shutter button to enter.

To select the game, you would like to play, use the right and left arrow buttons to choose one, then press the 'Photo/Video' button to enter and play.

Use the arrow buttons and the 'Photo/Video' shutter button to play the games you selected.

To exit the 'Games' tab and return to the main menu press the 'Power' button once.

## Music

Add audio files in MP4 format on the SD card. Insert the Micro-SD card into your camera. From the camera's main menu, highlight the 'Music' tab, then press 'Photo/Video' shutter button to enter.

Using the arrow buttons and 'Photo/Shutter' button, you can start playing/pausing the audio files uploaded on your Micro-SD card.

***Note: Make sure you have the volume set to ON and set the level required via 'Camera Settings'.***

To exit the 'Music' tab and return to the main menu press the 'Power' button once.

Observation	Potential Cause/Solution
<b>Unable to boot</b>	Try charging the camera before starting up again.
<b>Memory card error prompt</b>	Either format or replace the memory card.
<b>System crash/Unable to shut down</b>	If your camera is not functioning correctly or not responding, please process a forced reset. Insert a pin/paper clip into the 'Reset' hole ( <b>Ref.14</b> ) that can be found next to the charging port. This action will reset to factory settings.

## Specification

<b>Display</b>	2 inch IPS screen
<b>Features</b>	Photo taking, video recording, games
<b>Video format</b>	AVI
<b>Photo format</b>	JPEG
<b>Battery</b>	600mAh
<b>Charging voltage</b>	DC 5V / 1A
<b>Charging time</b>	3 hours
<b>Extended storage</b>	Up to 3GB TF (micro SD) card



## Support

If you require further assistance with your ClickKid product, please contact our support team on the ClickKid website:

**[clickid.co.uk/support](http://clickid.co.uk/support)**

## Warranty

The Clickid CAM10 comes with a 12-month standard warranty, to which we add an additional 12-month warranty, guaranteed from the date of purchase.

1. Read these instructions.
2. Keep these instructions. Instructions are also available for download at [www.clickid.co.uk](http://www.clickid.co.uk).
3. Heed all warnings.
4. Follow all instructions.
5. Do not clean the apparatus near or with water.
6. Do not block any ventilation openings. Install in accordance with the manufacturer's instructions.
7. Do not block any ventilation openings. Install in accordance with the manufacturer's instructions.
8. Do not install near any heat sources such as radiators, heat registers, stoves, or other apparatus that produce heat.
9. Protect the power from being walked on or pinched particularly at plugs, convenience receptacles, and the point where they exit from the apparatus.
10. Only use accessories specified by the manufacturer.
11. Unplug this apparatus during light storms or when unused for long periods of time.
12. Refer all servicing to qualified service personnel.
13. No naked flame sources, such as a lit candle should be placed on the apparatus.
14. Dispose of used electrical products and batteries safely according to your local authority and regulations.

## ADDITIONAL WARNINGS

The apparatus shall not be exposed to dripping, splashing or objects filled with water.

The main plug is used to disconnect the device. In order to disconnect the apparatus from the main mains completely, the mains plug should be disconnected from the main socket outlet completely.

Battery shall not be exposed to excessive heat.

## RECYCLING ELECTRICAL PRODUCTS

You should now recycle your waste electrical goods and in doing so help the environment.



This symbol means an electrical product should not be disposed of with normal household waste. Please ensure it is taken to a suitable facility for disposal when finished.

**IMPORTANT: Please read all instructions carefully before use and keep for future reference.**



Risk of electric shock.  
Do not open.



Read all instructions carefully before use and keep for future reference.



When servicing, use only identical replacement parts.



### ATTENTION

RISK OF ELECTRIC SHOCK  
DO NOT OPEN



### CAUTION

RISQUE D'ELECTROCUTION  
NE PAS OUVRIR



**IMPORTANT: Please read all instructions carefully before use and keep for future reference**